

ELEMENTI

SAN FRANCISCO | LOS ANGELES | NEW YORK



LE CAVE VANITY

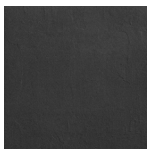
Le Cave bathroom vanity expresses a contemporary and exclusive design without neglecting the needs of a space dedicated to the personal wellness.

The handle for the opening of pull-out baskets is made out from pairing the vanity top inclined front edge of the vanity top and the 45° cut upper edge of the door, giving lightness and purity of shapes to the complete vanity unit, making its lines timeless.

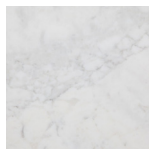
The bathroom vanity can be proposed in many combinations: with the wash basin carved in the stone top or matched with a counter-top basin from Le Cave collection, suspended or free-standing, and even used as a storage seat and in different measures, always aiming to reach the ideal ergonomic design for the customer.

The interior is customizable as well, with the possibility to include exclusive stone accessories designed by Vaselli that perfectly suit the other elements of Le Cave collection. Designed and manufactured by Vaselli.

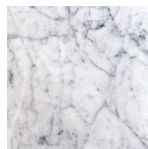
FINISHES (MATERIAL IS CUSTOMIZABLE)



ARDESIA



BIANCO
STATUARIO



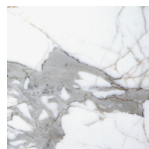
BIANCO
CARRARA



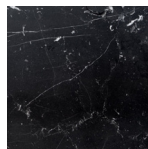
BRECCIA
CAPRAIA



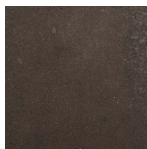
CLASSICO
RECISA LEVIGATO



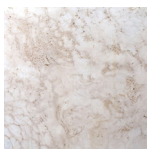
MARMO
CALACATTA



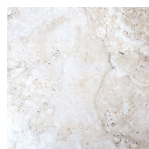
MARMO NERO
MARQUINIA



PIETRA LAVICA



TRAVERTINO
ALABASTRINO
FALDA



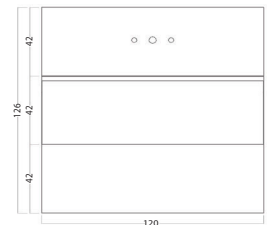
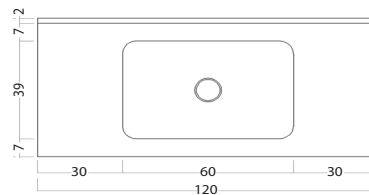
TRAVERTINO
BIANCO
RAPOLANO FALDA



TRAVERTINO
NOCE FALDA



TRAVERTINO
TITANIO RECISA



DIMENSIONS & WEIGHT

120 x 126 x 55 cm | 47 x 49 x 21.5 in
Dimensions Customizable

210 Kg | 463 Lbs

CARE & MAINTENANCE WEIGHT

As surface protection against stains, we apply a protective coating to facilitate cleaning and maintain the beauty of the material. We offer two different products: the first is solvent based, FILAFOB, the second is water-based, FILAMP90 ECO PLUS.

